

ALWOODLEY



PRIMARY



COGNITIVE
EDUCATION



READING



PERSONAL
DEVELOPMENT

Learning Together, Growing Stronger.



Welcome

Hello!

On behalf of everyone at Alwoodley we welcome you into Reception. We know what an exciting yet nervous time this can be for many so we hope this guide gives you a useful insight into what to expect!



The Reception Team



Mrs C. Black
Class Teacher



Mrs L. Fairbanks
Class Teacher



Mrs L. Gillatt
Class Teacher



Mrs H. Williams
LSA



Mrs K. Ryan
LSA



Miss S. Myers
LSA



Mrs A. Myers
LSA

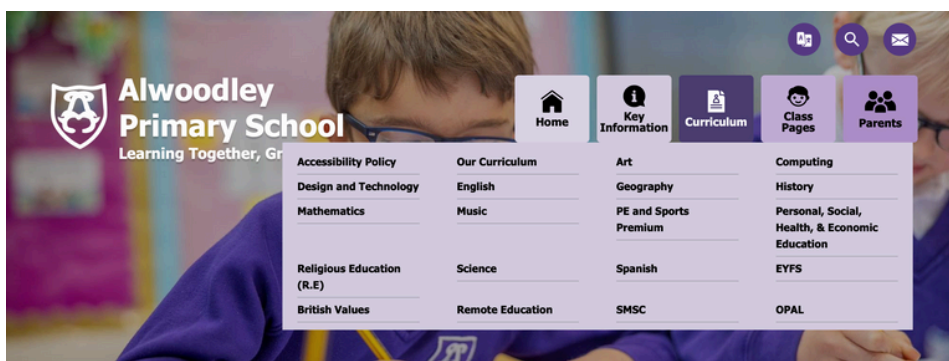
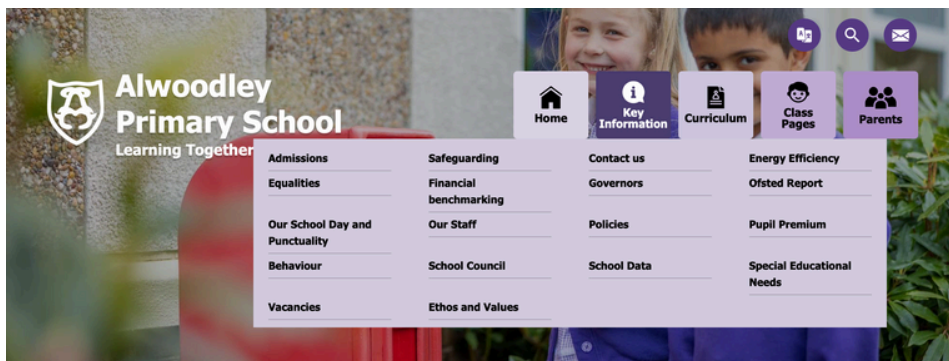
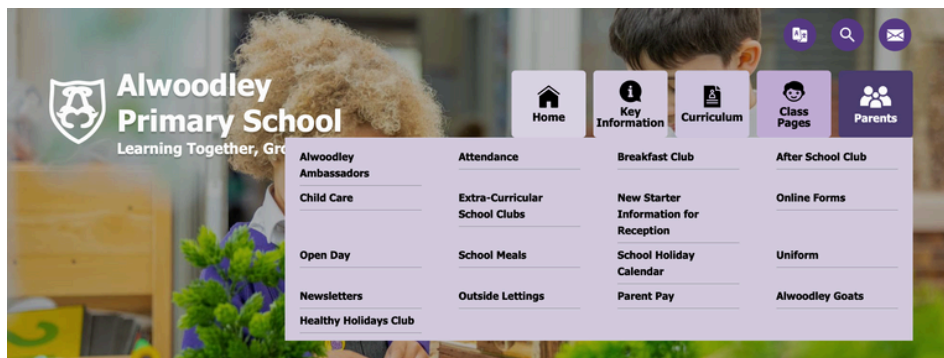


Mrs S. Wray
Whole School SENCo

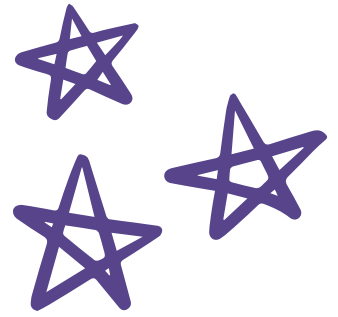
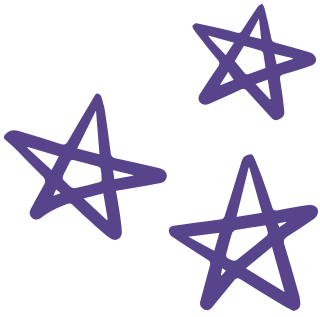


Website

Please familiarise yourself with our website www.alwoodleyprimary.net



On our Reception class page, you will also find a parents guide to the EYFS with translations available in Arabic, Polish, Punjabi, Urdu & Bengali.



Settling In

Talk Excitedly: Share your happy school memories with your child and talk about the exciting experiences awaiting your child.

Mirror Routines: Create a daily routine at home that mirrors the schedule of the new setting. Provide a sense of security and predictability during the transition.

Encourage Expression: Encourage your child to express their feelings about starting school. Listen attentively and validate their emotions to ease any worries they may have.

Positive Drop-offs: Maintain a positive and reassuring attitude during drop-offs. Assure your child that you will return to pick them up later, building their confidence and trust.

Special Goodbye Rituals: Create a special goodbye ritual, like a unique handshake or a quick hug, to provide comfort and security before they enter the classroom.

Establish Connection: Connect with the school and your child's teachers. Attend meetings, engage in conversations about their progress, and participate in school activities. In the second week of September, we will hold a coffee morning for you to meet and mix with other parents as well as getting to know the teachers more.

Read Together: Read books about starting school to normalise and familiarise your child with the experience. Use this time for discussions about their feelings and expectations.

Be Patient and Supportive: Be patient and supportive as your child settles into their new routine. Understand that transitions take time, and every child adjusts at their own pace.



The School
Day

The title 'The School Day' is written in a purple, rounded font. It is surrounded by several purple five-pointed stars of varying sizes. Above the text is a purple shield-shaped crest containing a stylized figure.

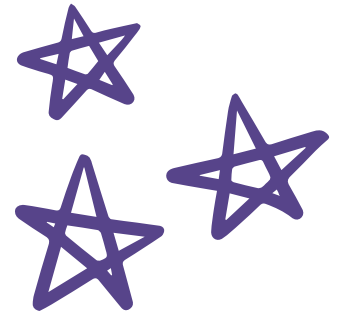
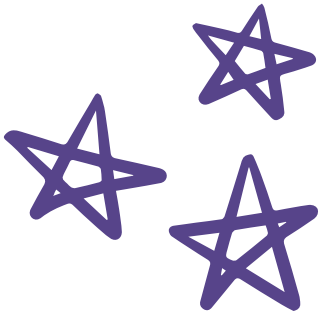
The gate into our outdoor area opens at 8.40am.
Register is taken at 8.50am.

School finishes at 3.10pm . Please pick up on time.

If you are late, on arrival please go to the main school entrance where you can sign your child in and then bring them round to the Reception entrance. We have reading sessions at 9am and it is very important that your child is in on time for them.

If your child is absent, please log this on your child's Arbor account.





A typical timetable

A typical day in Reception:

8.40am: Doors open and children put their coats away and pumps on. They find their carpet spot for a morning activity.

9am: Small group reading session to apply phonics knowledge.

9.15am: Writing input linked to a book

9.30-10.45am: Exploring provision

10.50-11.15am: Phonics

11.20am-12.20pm: Lunch time

12.25-12.35pm: Handwriting & Spelling

12.35-12.50pm: Topic/maths input

12.50-2.25pm: Exploring provision

2.30-2.45pm: Topic/maths input

2.45-3pm: Magic of stories

3pm: Get ready for home-time



Curriculum

The Early Years Foundation Stage Curriculum builds upon the work your child has done at Nursery. Children learn best through play-based activities, which we provide both in the classrooms as well as the outdoors. Adults support and scaffold their learning.

“The design and implementation of the curriculum in early years are exceptional. There is a consistent approach to when and why practitioners intervene in children’s play to enrich their learning. The indoor and outdoor learning environments support and enhance the curriculum, with a wide range of opportunities for children to apply the skills they have been taught. Consequently, children are deeply engaged and show sustained concentration”

OFSTED, May 2014





All of the information you need about uniform is on our website. Please note that Reception children require a change of footwear for inside the classroom. This can be a different pair of shoes or a pair of pumps.

Please label every item of clothing.

Please support your child to be as independent as possible when getting dressed / undressed, changing their shoes and putting their coats on.

Unless your child is able to do shoe laces by themselves, please buy shoes with Velcro or elastic openings.





Tapestry

Every child in Reception will have a 'Tapestry' online journal. If your child already had an account in Nursery, this can be transferred to us.

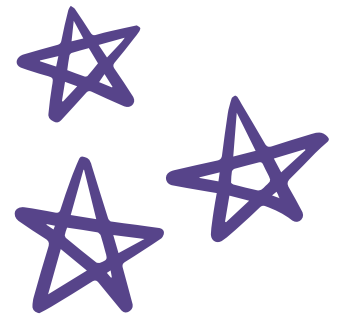
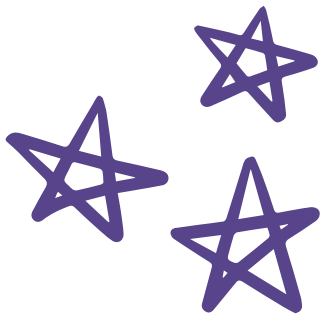
Here we will share photos and videos of things we have been doing in school. please use these pictures as prompts to talk to your child about what they are learning. We will also ask you to upload pictures of celebrations and interesting things you have done out of school to support children being able to talk about them to the class.

To gain access to your child's account, please look out for an account activation email from tapestryjournal.com.

Keeping in touch

- We will have 2 parent consultation meetings during the year.
- We will send out newsletters covering our curriculum and key dates every half term.
- We will invite you into school regularly through the year for stay & play sessions.
- Please speak to a member of staff if you ever have any queries.
- Please ensure you regularly check your 'Arbor' account and have 'notifications' on so you are alerted to messages.





Healthy School

Children are provided with a piece of fruit as a snack everyday. Up until their 5th birthday, children will also receive a free carton of milk each day if you sign up. Details of how to order this will be sent to you from the school office. When your child turns 5, you have the option to pay to continue receiving milk each day.

The children are encouraged to drink water throughout the day. Please send in a named, full water bottle daily.

Please ensure packed lunches are healthy and balanced.

We are a NUT FREE school as this can be fatal to some children in our school who suffer from nut allergies.

All Early years and Key Stage 1 children are entitled to a free school meal each day. There will be a selection of different meals available each day for you & your child to choose from every morning. Vegetarian and Halal options are available. Please let us know if your child has any dietary restrictions or allergies via your Arbor account.

Please help the children to practice using a knife and fork.



☆ ☆ The Wider ☆ ☆ School

At Alwoodley, we are extremely lucky to be able to access a wonderful outdoor space which enhances and enriches our curriculum.



Noodle, Nero, Nico & Shelly are all part our family

Our school grounds are bursting with opportunities for play thanks to our OPAL approach



and the fire pit is the PERFECT place to gather around for a celebration, story or song!