



**Fundraising**

We would like to take a moment to extend a huge thank you to all our families for their continued support this academic year, especially when it comes to fundraising efforts. Your generosity has made a real difference, and we are proud to share that the funds raised have been reinvested into the school to benefit all our pupils, from Nursery to Year 6.

Many of you will have seen the fantastic fire pit installed thanks to the fundraising from the Autumn Fair. Children across the school have been enjoying hot chocolate and marshmallows around the fire as part of their class rewards, bringing warmth and joy to their school experience.

We are also excited to invite all families to join us on **Friday, November 22nd**, from 5:30 to 8:30 p.m. for our Light Night event, where you can see the fire pit lit up. While we won't be gathering around the fire itself, there will be plenty of activities to keep everyone entertained, including a light show by our amazing photographer, Lee Call, food and drinks, and glow up items for sale. Please note, this will be a cash-only event, and we can't wait to see you there!

A big thank you also goes out to all the families who helped their children design Christmas cards. We were so impressed with the creativity and quality of the designs, and we hope you enjoy sending them to your friends and family.

As we approach the festive season, we have chosen Candlelighters, a charity that has supported families, both past and present, to be our focus this year. If you're attending any of our Nativity or Christmas shows, please consider bringing a small cash donation, which will be added to this collection.

Finally, thank you to everyone who contributed to Children in Need last Friday. We are delighted to announce that we raised a total of £308.88

**Traffic and parking**

This topic continues to feature in our newsletters, and we sincerely hope we can reduce the need to address it over time. We are often approached by local residents and parents who raise concerns about parking and driving on the streets adjacent to school.

While this land does not belong to the school, and we are not directly responsible for it, we feel strongly about the safety of our pupils and the wider community. Unfortunately, some of the parking and driving we've observed is both risky and unacceptable.

We have seen cars parked on zig-zag lines, with drivers saying, "It's only for a moment," and incidents where wing mirrors have been clipped, with drivers driving off. Such actions put children at unnecessary risk.

We kindly ask all families to park and drive with care and consideration, ensuring the safety of everyone. Let's work together to improve this situation and set a positive example for our children.

**OPAL**

Pupils have been delighted finding "treasure" in the digging area. Thank you for those people who have sent treasure in to us. If you have any items you think we can bury to uncover please send them in to Miss Hill who will hide them with The Wombles club: items might include: coins, beads, costume jewellery etc.

We are also developing our creative play area. Pupils have been enjoying play dough, chalking and colouring in. If you are clearing out before Christmas and have any crayons (not pens / pencils) or colouring / sticker books that have pages left in them to complete, please send them to the office for the attention on Miss Hill.

**Diary Dates**

**Friday 22<sup>nd</sup> November**

5:30-8:30 Light Night

**Wednesday 27<sup>th</sup> November**

Reception Open Day

- 9.30 – 11.00
- 13.15 – 14.45
- 17.30 – 18.30

**Wednesday 4<sup>th</sup> December**

Phase 1 theatre (am)

**Friday 6<sup>th</sup> December 2pm**

Music afternoon for choir, woodwind and violins

**Wednesday 11<sup>th</sup> December**

9.30 Year 2 concert, 10.45

Nursery, 1.15 Nursery and 2pm Reception

**Thursday 12<sup>th</sup> December**

Christmas Dinner Day – All children are invited to wear a **festive jumper** to school.

**Friday 13<sup>th</sup> December**

9.30 Year 2 concert 10.45 Year 1 sing a long

**Monday 16<sup>th</sup> December**

2:50 Hazel 3 drumming performance

**Tuesday 17<sup>th</sup> December**

Year 5 and 6 musicians to see the Snowman

**Thursday 19<sup>th</sup> December**

12.30-5pm -Phase 2 theatre

**CHRISTMAS PARTY DAYS**

Tuesday 17<sup>th</sup> December Y3 / Y4

Wednesday 18<sup>th</sup> December R / N

Thursday 19<sup>th</sup> December Y1 / Y2

Friday 20<sup>th</sup> December Y5 / Y6

**Remember Monday 6<sup>th</sup>**

**January is a teacher training day.**

**Wednesday 12<sup>th</sup> February**

N, R, 1 & 2 parents' meetings 2:15-7:15 (Nursery to start at 3:30)

**Thursday 13<sup>th</sup> February**

3, 4, 5 & 6 2:15-7:15

Safeguarding Team: Mr. German, Miss Hill, Miss Pattenden, Mrs. Wray, Mrs. Shaw & Mr. Arundale.

Website: [www.alwoodleyprimary.net](http://www.alwoodleyprimary.net)

Contact: 0113 2686104

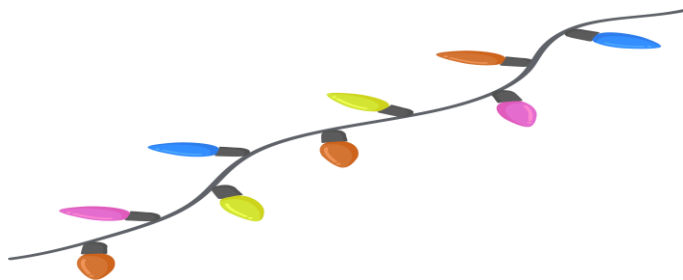
Email: [office@alwoodley.net](mailto:office@alwoodley.net)



### Wellbeing Focus: Finding Joy in the Darker Nights

As the days grow shorter and the nights draw in, it's natural to feel a little less energetic or motivated. However, darker evenings can also be an opportunity to embrace cosy moments and focus on our wellbeing. Here are some simple ways for families to stay happy and content during this season:

1. **Create a Cosy Atmosphere**  
Transform your evenings with warm lighting, soft blankets, and a little music or a family movie. Embrace the chance to slow down and enjoy the comforts of home.
2. **Get Moving Outdoors**  
Wrap up warm and take a brisk walk after school or dinner. Even a short time outside can help boost your mood and energy levels, thanks to the fresh air and exercise.
3. **Plan Indoor Fun**  
Use the early evenings to try a new hobby, play board games, bake some treats together, or work on a puzzle. These shared activities are a great way to unwind as a family.
4. **Focus on Gratitude**  
Take a moment each evening to reflect on one or two things that made you smile during the day. This practice helps everyone shift their focus to the positive.
5. **Stick to a Routine**  
As tempting as it is to curl up all day, sticking to regular routines for bedtime, meals, and schoolwork can help children feel secure and balanced.
6. **Light it Up**  
Fairy lights, candles, or even a small firepit outdoors (with supervision!) can make the dark evenings feel magical rather than gloomy.



### Attendance

Our school target is 97%. At present we are behind our school target and it stands at 95.9% Please help by making attendance and punctuality a priority.

The classes with the best attendance this half term, so far, are Phase 1 - **Oak 1 96.93%** and Phase 2 - **Poplar 5 - 97.55%** there are still four weeks to go so it can all change, your support is very much appreciated.

The classes with the best attendance this half term will get a Pizza Party at the fire pit - weather permitting.

If your child is absent, please telephone the school attendance officer **as soon as possible - ideally before 9am** on the first day of absence (and each subsequent day of absence) on 0113 2686

Reminder - If you are shopping online, please scan the QR code below and go through easyfundraising. It costs you nothing and a % goes to school.



Scan QR Code to go directly to the Friends of Alwoodley Primary easyfundraising page



Safeguarding Team: Mr. German, Miss Hill, Miss Pattenden, Mrs. Wray, Mrs. Shaw & Mr. Arundale.

Website:  
www.alwoodleyprimary.net

Contact:  
0113 2686104

Email:  
office@alwoodley.net